



Quick Installation Guide



COMSOL Multiphysics Quick Installation Guide

© 1998–2012 COMSOL

Protected by U.S. Patents 7,519,518; 7,596,474; and 7,623,991. Patents pending.

This Documentation and the Programs described herein are furnished under the COMSOL Software License Agreement (www.comsol.com/sla) and may be used or copied only under the terms of the license agreement.

COMSOL, COMSOL Desktop, COMSOL Multiphysics, and LiveLink are registered trademarks or trademarks of COMSOL AB. Other product or brand names are trademarks or registered trademarks of their respective holders.

Version:

May 2012

COMSOL 4.3

Contact Information

Visit www.comsol.com/contact for a searchable list of all COMSOL offices and local representatives. From this web page, search the contacts and find a local sales representative, go to other COMSOL websites, request information and pricing, submit technical support queries, subscribe to the monthly eNews email newsletter, and much more.

If you need to contact Technical Support, an online request form is located at www.comsol.com/support/contact.

Other useful links include:

- Technical Support www.comsol.com/support
- Software updates: www.comsol.com/support/updates
- Online community: www.comsol.com/community
- Events, conferences, and training: www.comsol.com/events
- Tutorials: www.comsol.com/products/tutorials
- Knowledge Base: www.comsol.com/support/knowledgebase

Before You Begin

CHECK SYSTEM REQUIREMENTS

Make sure your system satisfies all applicable requirements. Go to www.comsol.com/products/requirements to check our requirements list.

OBTAIN LICENSE FILE OR PASSCODE

Have the license file or passcode (Windows and Mac trial license installations only) ready.

A passcode has a form similar to:

FFFFFFF - TYUS - 111031 - 1234567 - 123456789

A license file or a passcode is required to install COMSOL 4.3. You should have received it in an email or letter from your sales representative. If the passcode or license file has not been received, contact your local COMSOL representative.

LICENSE SERVER INSTALLATION NEEDED?

Some COMSOL license types require that a license manager is also installed before running a COMSOL software product. If COMSOL software is installed with a passcode, no license manager is needed. If it is installed with a license file, you need to install the license manager if the license file contains a line starting with the word SERVER. See the sections about license manager installation in the *COMSOL Installation and Operations Guide*.

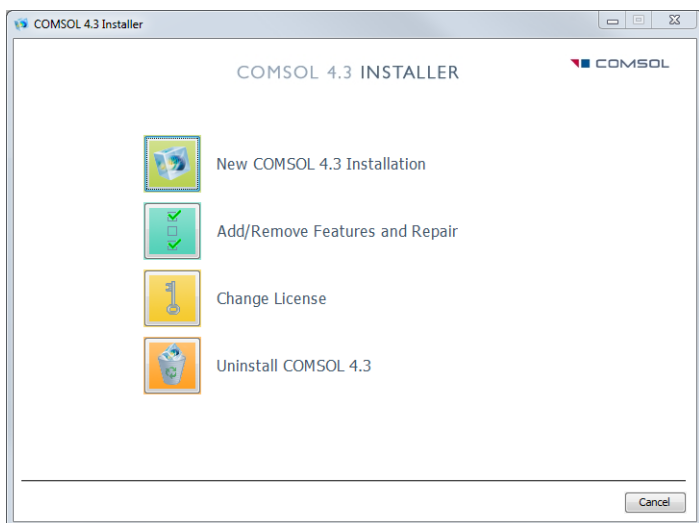
NEED MORE INFO?

For complete installation instructions, information about installing and running the COMSOL software with various license options, license manager, and client/server configurations, system requirements, and license error troubleshooting, see the *COMSOL Installation and Operations Guide*, which is included as a PDF file on the installation DVD, which is accessed by inserting the DVD without installing the software. It is also available in the COMSOL Help Desk after installation in HTML and PDF formats. If you have an older version of COMSOL installed, you can install this new version in parallel and without any difficulties.

See also the COMSOL Support Knowledge Base at www.comsol.com/support for up-to-date information about specific issues that might concern certain hardware or operating system versions.

Installing COMSOL 4.3 on Windows

- 1 Before starting, make sure you have administrative privileges.
- 2 Insert the COMSOL 4.3 DVD into the DVD drive. The **COMSOL Setup** window should appear automatically; if not, run the file `setup.exe` on the installation DVD.
- 3 Click the **New COMSOL 4.3 Installation** button.



- 4 Continue with the installation according to the instructions that appear.
- 5 When the installation is complete, you get a chance to view the installation log. Click **Finish** to exit the installation program.

Installing COMSOL 4.3 on Linux

- 1 You may need root privileges to install COMSOL in a system directory. You may also need root privileges to mount the DVD.
- 2 The COMSOL installer is an X-windows application so you need to be logged in with access to an X-windows display.
- 3 Insert the COMSOL 4.3 DVD into the DVD drive. If the DVD is not mounted automatically by your operating system, use the `mount` command to mount the DVD.
- 4 To start the installation, enter the command

```
sh /media/dvd/setup
```

The path `/media/dvd` is the mount point of the DVD drive.



- 5 Continue with the installation according to the instructions that appear.
- 6 When the installation is complete, a **Finish** window appears. Click **Finish** to exit the installation program. The installation program writes an installation log to the text file `comsolsetup.log` in the COMSOL installation directory.

Installing COMSOL 4.3 on Mac

- 1 You need administrative privileges to install COMSOL in a system directory.
- 2 Insert the COMSOL 4.3 DVD into the DVD drive. Launch the **COMSOL Installer** application from the Finder. The **COMSOL 4.3 Installer** window appears.



- 3 Click the **New COMSOL 4.3 Installation** button.
- 4 Continue with the installation according to the instructions that appear.
- 5 When the installation is complete, you get a chance to view the installation log. Click **Finish** to exit the installation program.

Getting Started

In addition to this manual, many other resources are supplied to help you get the most out of COMSOL products.

Introduction to COMSOL Multiphysics and Online Help

The easiest way for new users to get an overview of COMSOL Multiphysics' capabilities and how to use them is to read *Introduction to COMSOL Multiphysics*, which is also included with the DVD. Further, the full COMSOL documentation set is available on your computer in the COMSOL help resources and as a set of PDF files. In the COMSOL Multiphysics user interface, choose **Documentation** from the **Help** menu to access all documentation. You can also access context-sensitive dynamic help that provides help for all nodes in the Model Builder and windows on the COMSOL Desktop, including links to the full product documentation.

The model libraries in COMSOL Multiphysics and the modules provide many fully-documented example models that you can study to learn about modeling techniques and to use as starting points for your own models.

Additional Information On the DVD

The root folder on the COMSOL 4.3 DVD contains the *Installation and Operations Guide* and the *Release Notes* in PDF format. The *Installation and Operations Guide* contains additional information on installing and running COMSOL. The *Release Notes* contains notices about functionality and backward compatibility.

Technical Support

If any questions arise regarding COMSOL software products, do not hesitate to contact your local COMSOL representative or send your questions to support@comsol.com.

Further, at www.comsol.com/support you can find a broad range of technical support resources including the searchable COMSOL Knowledge Base.

Running COMSOL Multiphysics

On Windows, you find COMSOL program icons on the desktop and by pointing to **COMSOL 4.3** on the **Start** menu.

On Mac, the COMSOL programs are available in the **COMSOL42a** folder, which you find in the **Applications** folder.

On Linux, run the `comsol` command to start COMSOL Multiphysics.

For further information about the COMSOL commands, available client/server options, and about running the COMSOL software in clusters and other multiprocessor systems, see the *COMSOL Installation and Operations Guide*. It is available as a PDF file in the root directory of the installation DVD.

